



**Napco Security Systems, Inc.**  
 333 Bayview Avenue  
 Amityville, New York 11701  
 For Sales and Repairs, (800) 645-9445  
 For Technical Service, (800) 645-9440

# GEM-WP Panic Transmitter

© NAPCO 1998

WI955 11/98

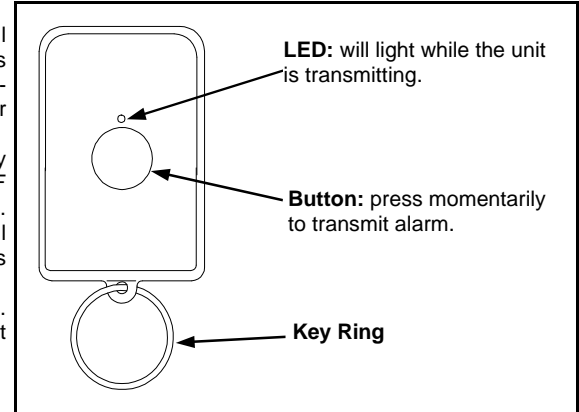
## GENERAL DESCRIPTION

The GEM-WP is a single function pendant/keychain transmitter compatible with all Gemini and NAPCO Express control panels when used with the appropriate wireless receiver. The GEM-REVC-XP8 is compatible with the NAPCO Express Series and GEM-P400 & P800. For all other Gem series controls, the GEM-RECV8, GEM-RECV16 or GEM-RECV96 are compatible.

It serves as an emergency device for use as a police panic and/or auxiliary emergency transmitter. Two replaceable Energizer 386 1.5 V, Silver Oxide Cells power the GEM-KEYF transmitter. A flashing LED indication signals a low-battery warning to replace the batteries.

To operate simply press the button momentarily. **Note:** The button when pressed will transmit the respective signal to the Central Station. The LED will light while the unit is transmitting.

**Low-Battery Check.** The batteries are checked automatically during any transmission. A low-battery condition will cause the LED to come on for twice the normal time, then start pulsing about once every 1.5 seconds; a low-battery report will be sent to the receiver.



**Single Button Panic Transmitter**

## REQUIRED PROGRAMMING

The following information is required for each unit. Refer to the instructions for the control panel and keypad in use for detailed programming information.

- ✓ an assigned Key Fob transmitter number
- ✓ area number(s) to which transmitter is applicable
- ✓ the 6-digit ID code with checksum digit printed on the transmitter (enter all numbers and/or letters, including leading zeros, if any)
- ✓ the appropriate Aux. 1 function (Panic or Auxiliary)

If more GEM-WP transmitter are needed, the GEM-P1632, GEM-P3200 & GEM-P9600 support the ability to map a GEM-WP directly to a zone.

- ✓ on the Wireless Screen, program the 6-digit ID code to a zone.
- ✓ program the point as point 3.
- ✓ on the zone features screen, program the zone for 24 hour protection, and remove swinger shutdown if programmed.
- ✓ on the Alarm / Trouble reporting screen Program the appropriate reporting code.

## BATTERY REPLACEMENT

To replace the batteries:

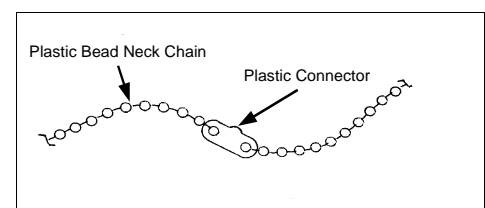
1. Remove the screws on the bottom of case and turnover. Lift off the top cover exposing the circuit boards.
2. *Carefully* lift the top circuit board to allow removal of batteries from bottom circuit board. Lift the top circuit board away from the bottom circuit board **no more than 45 degrees** (see figures 1 and 2) to allow removal of batteries.
3. Slide the bottom battery out and away from the circuit board. Replace the battery as shown (see figures 3 & 4).
4. Replace the top battery by sliding it out to the right. Replace the battery as shown (see figures 3 & 4).
5. Carefully press the top circuit board back toward the bottom circuit board. Reassemble the case and slip the neckchain through the eyelet.
6. Test the button to verify its function.

**Note:** Inform the Central Station about the test or disable the transmission of panic during the test.

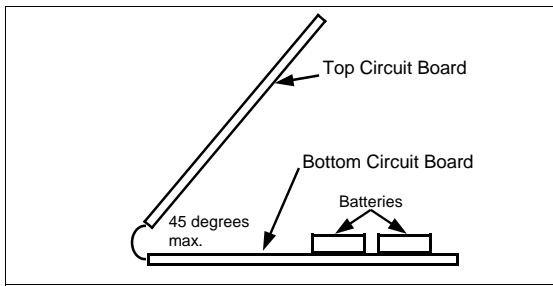
## ADJUSTING CHAIN LENGTH

The GEM-WP has a Plastic Bead Neck Chain included. To adjust its length:

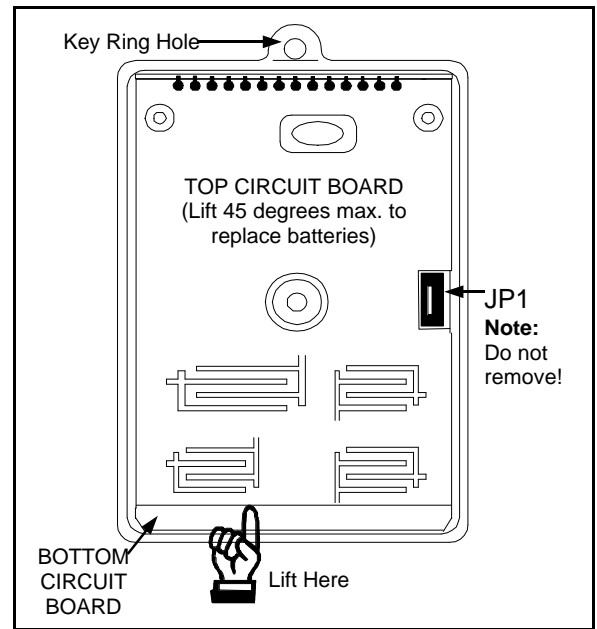
1. Disconnect the chain from one end of the plastic connector by removing a plastic bead.
2. Using a pair of scissors cut the chain at its desired length.
3. Reconnect the chain to the connector by inserting a bead into the connector.



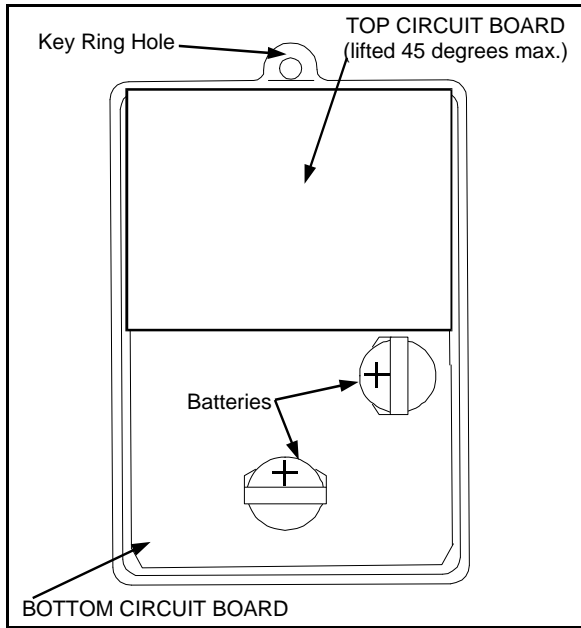
**Plastic Bead Neck Chain**



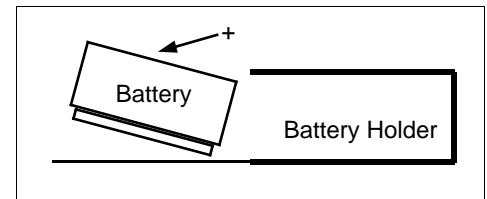
**Figure 1: Side View - Lift Top Circuit Board**



**Figure 2: Top View of Top Circuit Board**



**Figure 3: Top View of Bottom Circuit Board for Battery Replacement with Top Circuit Board**



**Figure 4: Angle the Battery on Entry**

## NAPCO SECURITY LIMITED WARRANTY



NAPCO SECURITY SYSTEMS, INC. (NAPCO) warrants its products to be free from manufacturing defects in materials and workmanship for *thirty-six months* following the date of manufacture. NAPCO will, within said period, at its option, repair or replace any product failing to operate correctly without charge to the original purchaser or user.

This warranty shall not apply to any equipment, or any part thereof, which has been repaired by others, improperly installed, improperly used, abused, altered, damaged, subjected to acts of God, or on which any serial numbers have been altered, defaced or removed. Seller will not be responsible for any dismantling or reinstallation charges.

THERE ARE NO WARRANTIES, EXPRESS OR IMPLIED, WHICH EXTEND BEYOND THE DESCRIPTION ON THE FACE HEREOF. THERE IS NO EXPRESS OR IMPLIED WARRANTY OF MERCHANTABILITY OR A WARRANTY OF FITNESS FOR A PARTICULAR PURPOSE. ADDITIONALLY, THIS WARRANTY IS IN LIEU OF ALL OTHER OBLIGATIONS OR LIABILITIES ON THE PART OF NAPCO.

Any action for breach of warranty, including but not limited to any implied warranty of merchant ability, must be brought within the six months following the end of the warranty period.

IN NO CASE SHALL NAPCO BE LIABLE TO ANYONE FOR ANY CONSEQUENTIAL OR INCIDENTAL DAMAGES FOR BREACH OF THIS OR ANY OTHER WARRANTY, EXPRESS OR IMPLIED, EVEN IF THE LOSS OR DAMAGE IS CAUSED BY THE SELLER'S OWN NEGLIGENCE OR FAULT.

In case of defect, contact the security professional who installed and maintains your security system. In order to exercise the warranty, the product must be returned by the security professional, shipping costs prepaid and insured to NAPCO. After repair or replacement, NAPCO assumes the cost of returning products under warranty. NAPCO shall have no obligation under this warranty, or otherwise, if the product has been repaired by others, improperly installed, improperly used, abused, altered, damaged, subjected to accident, nuisance, flood, fire or acts of God, or on which any serial numbers have been altered, defaced or removed. NAPCO will not be responsible for any dismantling, reassembly or reinstallation charges.

This warranty contains the entire warranty. It is the sole warranty and any prior agreements or representations, whether oral or written, are either merged herein or are expressly canceled. NAPCO neither assumes, nor authorizes any other person pur-

porting to act on its behalf to modify, to change, or to assume for it, any other warranty or liability concerning its products. In no event shall NAPCO be liable for an amount in excess of NAPCO's original selling price of the product, for any loss or damage, whether direct, indirect, incidental, consequential, or otherwise arising out of any failure of the product. Seller's warranty, as herein above set forth, shall not be enlarged, diminished or affected by and no obligation or liability shall arise or grow out of Seller's rendering of technical advice or service in connection with Buyer's order of the goods furnished thereunder.

**NAPCO RECOMMENDS THAT THE ENTIRE SYSTEM BE COMPLETELY TESTED WEEKLY.**

Warning: Despite frequent testing, and due to, but not limited to, any or all of the following; criminal tampering, electrical or communications disruption, it is possible for the system to fail to perform as expected. NAPCO does not represent that the product/system may not be compromised or circumvented; or that the product or system will prevent any personal injury or property loss by burglary, robbery, fire or otherwise; nor that the product or system will in all cases provide adequate warning or protection. A properly installed and maintained alarm may only reduce risk of burglary, robbery, fire or otherwise but it is not insurance or a guarantee that these events will not occur. **CONSEQUENTLY, SELLER SHALL HAVE NO LIABILITY FOR ANY PERSONAL INJURY, PROPERTY DAMAGE, OR OTHER LOSS BASED ON A CLAIM THE PRODUCT FAILED TO GIVE WARNING.** Therefore, the installer should in turn advise the consumer to take any and all precautions for his or her safety including, but not limited to, fleeing the premises and calling police or fire department, in order to mitigate the possibilities of harm and/or damage.

NAPCO is not an insurer of either the property or safety of the user's family or employees, and limits its liability for any loss or damage including incidental or consequential damages to NAPCO's original selling price of the product regardless of the cause of such loss or damage.

Some states do not allow limitations on how long an implied warranty lasts or do not allow the exclusion or limitation of incidental or consequential damages, or differentiate in their treatment of limitations of liability for ordinary or gross negligence, so the above limitations or exclusions may not apply to you. This Warranty gives you specific legal rights and you may also have other rights which vary from state to state.